

Изделия для транспортировки диагностических образцов

Технические характеристики

По вопросам продаж и поддержки обращайтесь:

Алматы (727)345-47-04
Ангарск (3955)60-70-56
Архангельск (8182)63-90-72
Астрахань (8512)99-46-04
Барнаул (3852)73-04-60
Белгород (4722)40-23-64
Благовещенск (4162)22-76-07
Брянск (4832)59-03-52
Владивосток (423)249-28-31
Владикавказ (8672)28-90-48
Владимир (4922)49-43-18
Волгоград (844)278-03-48
Вологда (8172)26-41-59
Воронеж (473)204-51-73
Екатеринбург (343)384-55-89

Иваново (4932)77-34-06
Ижевск (3412)26-03-58
Иркутск (395)279-98-46
Казань (843)206-01-48
Калининград (4012)72-03-81
Калуга (4842)92-23-67
Кемерово (3842)65-04-62
Киров (8332)68-02-04
Коломна (4966)23-41-49
Кострома (4942)77-07-48
Краснодар (861)203-40-90
Красноярск (391)204-63-61
Курск (4712)77-13-04
Курган (3522)50-90-47
Липецк (4742)52-20-81

Магнитогорск (3519)55-03-13
Москва (495)268-04-70
Мурманск (8152)59-64-93
Набережные Челны (8552)20-53-41
Нижний Новгород (831)429-08-12
Новокузнецк (3843)20-46-81
Ноябрьск (3496)41-32-12
Новосибирск (383)227-86-73
Омск (3812)21-46-40
Орел (4862)44-53-42
Оренбург (3532)37-68-04
Пенза (8412)22-31-16
Петрозаводск (8142)55-98-37
Псков (8112)59-10-37
Пермь (342)205-81-47

Ростов-на-Дону (863)308-18-15
Рязань (4912)46-61-64
Самара (846)206-03-16
Санкт-Петербург (812)309-46-40
Саратов (845)249-38-78
Севастополь (8692)22-31-93
Саранск (8342)22-96-24
Симферополь (3652)67-13-56
Смоленск (4812)29-41-54
Сочи (862)225-72-31
Ставрополь (8652)20-65-13
Сургут (3462)77-98-35
Сыктывкар (8212)25-95-17
Тамбов (4752)50-40-97
Тверь (4822)63-31-35

Тольятти (8482)63-91-07
Томск (3822)98-41-53
Тула (4872)33-79-87
Тюмень (3452)66-21-18
Ульяновск (8422)24-23-59
Улан-Удэ (3012)59-97-51
Уфа (347)229-48-12
Хабаровск (4212)92-98-04
Чебоксары (8352)28-53-07
Челябинск (351)202-03-61
Череповец (8202)49-02-64
Чита (3022)38-34-83
Якутск (4112)23-90-97
Ярославль (4852)69-52-93

Россия +7(495)268-04-70

Казахстан +(727)345-47-04

Беларусь +(375)257-127-884

Узбекистан +998(71)205-18-59

Киргизия +996(312)96-26-47

эл.почта: syd@nt-rt.ru || сайт: <https://sarstedt.nt-rt.ru/>



Screw cap, suitable for cold transport container

65.590

Screw cap, suitable for cold transport container



Post transport packaging, 198 x 107 x 38 mm, for diagnostic specimens 95.900

Post transport packaging, application e.g.: external packaging according to P 650/ADR, flat design, (LxWxH): 198 x 107 x 38 mm, for diagnostic specimens, holds 1 to 4 transport containers/bottles up to a diameter of 30 mm, Locking mechanism, 50 piece(s)/case

Satisfies the requirement: P 650, ADR, IATA
Height of product: 38 mm



Post transport packaging, 107 x 198 x 50 mm, for diagnostic specimens 95.901

Post transport packaging, application e.g.: external packaging according to P 650/ADR, high design, (LxWxH): 107 x 198 x 50 mm, for diagnostic specimens, holds 1 to 4 transport containers/bottles up to a diameter of 30 mm, Locking mechanism, 50 piece(s)/case

Satisfies the requirement: P 650, ADR, IATA
Height of product: 50 mm



Post transport packaging, 220 x 170 x 40 mm, for diagnostic specimens 95.902

Post transport packaging, application e.g.: external packaging according to P 650/ADR, flat design, (LxWxH): 220 x 170 x 40 mm, for diagnostic specimens, holds 1 to 4 transport containers/bottles up to a diameter of 30 mm, enclosed foam foil pouch, 50 piece(s)/case

Satisfies the requirement: P 650, ADR, IATA
Height of product: 40 mm



Post transport packaging, 192 x 146 x 77 mm, for cold transport container

95.903

Post transport packaging, application e.g.: external packaging according to P 650/ADR, (LxWxH): 192 x 146 x 77 mm, for cold transport container, holds 1 to 4 transport containers/bottles up to a diameter of 30 mm, 50 piece(s)/case

Satisfies the requirement: P 650, ADR, IATA
Height of product: 77 mm

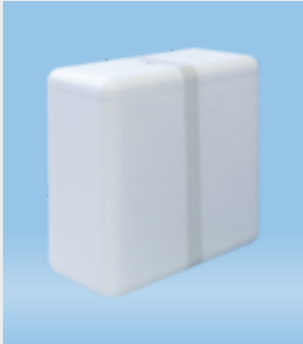


Cold transport container, German

95.995

Cold transport container, German

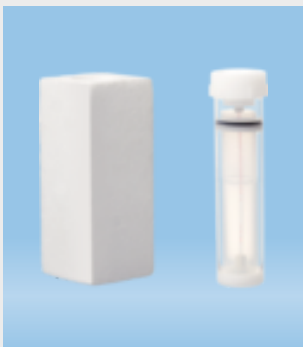
Satisfies the requirement: P 650, ADR
Height of product: 170 mm



Polystyrene container, suitable as outer packaging for cool transport 95.1011

Polystyrene container, suitable as outer packaging for cool transport

Height of product: 168 mm



Cold transport container for blood gas capillaries, S-Monovette® up to 105 x Ø 18 mm, transparent, length: 50 mm 95.997

Cold transport container for blood gas capillaries, S-Monovette® up to 105 x Ø 18 mm, transparent, length: 50 mm, Cold shipping / warm shipping, 1 piece(s)/case

Height of product: 140 mm



Cold transport container, English

95.1123

Cold transport container, English

Satisfies the requirement: P 650, ADR
Height of product: 170 mm



Slide mailing container, length: 85 mm, cap attached 86.972

Slide mailing container, with ventilation, length: 85 mm, cap attached, 50 piece(s)/bag



Mailing container, transparent, construction: round, length: 126 mm, Ø opening: 30 mm, without cap **78.896**

Mailing container, round, transparent, construction: round, length: 126 mm, Ø opening: 30 mm, without cap, cap: natural, 50 piece(s)/bag

Satisfies the requirement: **P 650, ADR**



Mailing container, transparent, construction: round, with absorbent liner, length: 126 mm, Ø opening: 30 mm, without cap **78.898**

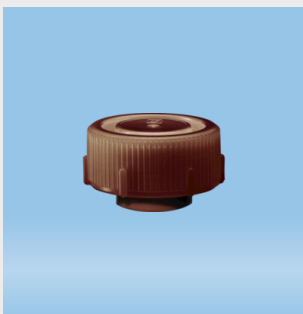
Mailing container, round, transparent, construction: round, with absorbent liner, length: 126 mm, Ø opening: 30 mm, without cap, 50 piece(s)/bag

Satisfies the requirement: **P 650, ADR**



Screw cap, natural, suitable for Mailing container 126 x 30 mm **65.679**

Screw cap, natural, suitable for Mailing container 126 x 30 mm, 50 piece(s)/bag



Screw cap, brown, suitable for Mailing container 126 x 30 mm **65.679.001**

Screw cap, brown, suitable for Mailing container 126 x 30 mm, 50 piece(s)/bag



Screw cap, natural, suitable for Mailing container 126 x 30 mm **65.731**

Screw cap, natural, suitable for Mailing container 126 x 30 mm, extended design, 50 piece(s)/bag



Mailing container, transparent, construction: round, length: 85 mm, Ø opening: 30 mm, without cap **78.890**

Mailing container, round, transparent, construction: round, length: 85 mm, Ø opening: 30 mm, without cap, cap: natural, 50 piece(s)/bag

Satisfies the requirement: **P 650, ADR**



Mailing container, transparent, construction: round, with absorbent liner, length: 85 mm, Ø opening: 30 mm, without cap **78.892**

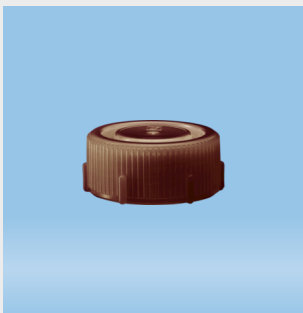
Mailing container, round, transparent, construction: round, with absorbent liner, length: 85 mm, Ø opening: 30 mm, without cap, 50 piece(s)/bag

Satisfies the requirement: **P 650, ADR**



Screw cap, natural, suitable for mailing container 85 x 30 mm **65.676**

Screw cap, natural, suitable for mailing container 85 x 30 mm, 50 piece(s)/bag



Screw cap, brown, suitable for mailing container 85 x 30 mm **65.676.001**

Screw cap, brown, suitable for mailing container 85 x 30 mm, 50 piece(s)/bag



Mailing container, transparent, construction: round, length: 114 mm, Ø opening: 44 mm, without cap **78.895**

Mailing container, round, transparent, construction: round, length: 114 mm, Ø opening: 44 mm, without cap, cap: natural, 50 piece(s)/bag

Satisfies the requirement: **P 650, ADR**



Mailing container, transparent, construction: round, with absorbent liner, length: 114 mm, Ø opening: 44 mm, without cap 78.897

Mailing container, round, transparent, construction: round, with absorbent liner, length: 114 mm, Ø opening: 44 mm, without cap, 50 piece(s)/bag

Satisfies the requirement: P 650, ADR



Screw cap, natural, suitable for Mailing container 114 x 44 mm 65.678

Screw cap, natural, suitable for Mailing container 114 x 44 mm, 50 piece(s)/bag



Mailing container, construction: square, length: 117 mm, Ø opening: 28 mm, cap enclosed 78.572

Mailing container, square, construction: square, (LxW): 117 x 35 mm, Ø opening: 28 mm, cap enclosed, cap: natural, 50 piece(s)/bag

Satisfies the requirement: P 650, ADR



Mailing container, construction: square, with absorbent liner, length: 117 mm, Ø opening: 28 mm, cap enclosed 78.573

Mailing container, square, construction: square, with absorbent liner, (LxW): 117 x 35 mm, Ø opening: 28 mm, cap enclosed, cap: natural, 50 piece(s)/bag

Satisfies the requirement: P 650, ADR



Mailing container, length: 179 mm, Ø opening: 28 mm, cap enclosed 78.574

Mailing container, (LxW): 179 x 35 mm, Ø opening: 28 mm, cap enclosed, cap: natural, 50 piece(s)/bag

Satisfies the requirement: P 650, ADR



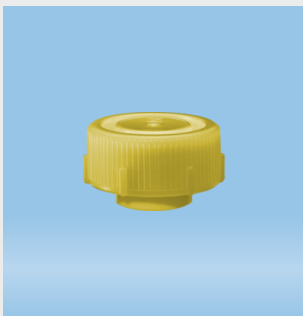
Mailing container, with absorbent liner, length: 179 mm, Ø opening: 28 mm, cap enclosed 78.574.500

Mailing container, with absorbent liner, (LxW): 179 x 35 mm, Ø opening: 28 mm, cap enclosed, cap: natural, 50 piece(s)/bag



Screw cap, red, suitable for Mailing container 126 x 30 mm 65.679.002

Screw cap, red, suitable for Mailing container 126 x 30 mm, 50 piece(s)/bag



Screw cap, yellow, suitable for Mailing container 126 x 30 mm 65.679.004

Screw cap, yellow, suitable for Mailing container 126 x 30 mm, 50 piece(s)/bag



Mailing container, brown, construction: round, with absorbent liner, length: 126 mm, Ø opening: 30 mm, without cap 78.898.300

Mailing container, round, brown, construction: round, with absorbent liner, length: 126 mm, Ø opening: 30 mm, without cap, 50 piece(s)/bag

Satisfies the requirement: **P 650, ADR**



Absorbent liner, suitable for Mailing container 114 x 44 mm, (LxW): 135 x 95 mm 78.669

Absorbent liner, suitable for Mailing container 114 x 44 mm, (LxW): 135 x 95 mm, 100 piece(s)/case



Transport case B 17, with lateral rim for block rack

95.1717

Transport case B 17, with lateral rim for block rack, (LxWxH): 395 x 395 x 435 mm

Satisfies the requirement: **P 650, ADR**



Transport case B 19, without lateral rim

95.1717.003

Transport case B 19, without lateral rim, (LxWxH): 395 x 395 x 435 mm

Satisfies the requirement: **P 650, ADR**



Transport case T 15, Wide aperture

95.1715

Transport case T 15, Wide aperture, (LxWxH): 395 x 395 x 435 mm

Satisfies the requirement: **P 650, ADR**



Transport case B 13, flat design for block rack

95.1717.011

Transport case B 13, flat design for block rack, (LxWxH): 395 x 395 x 300 mm

Satisfies the requirement: **P 650, ADR**



Transport case I 100, internal case with attachment

95.1720

Transport case I 100, internal case with attachment, (LxWxH): 360 x 310 x 275 mm

Satisfies the requirement: **TRBA 100**

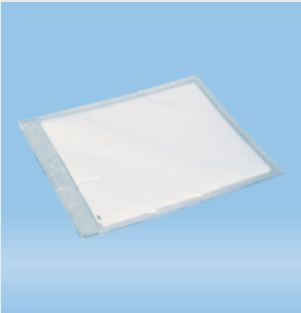


Transport case I 50, internal case for block rack

95.1720.011

Transport case I 50, internal case for block rack, (LxWxH): 270 x 170 x 215 mm

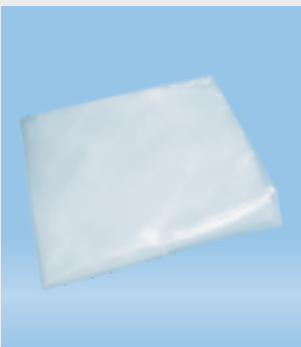
Satisfies the requirement: **TRBA 100**



Superabsorber pack, suitable for transport case T 15 and B 17, (LxW): 400 x 300 mm

95.1712

Superabsorber pack, suitable for transport case T 15 and B 17, (LxW): 400 x 300 mm, fluid intake: 1.2 l, 100 piece(s)/case



Cross-bottom bag, (LxW): 270 x 270 mm, PE

95.1713

Cross-bottom bag, (LxW): 270 x 270 mm, material: PE, for transport case B 17, 25 piece(s)/case



Closure clip, (LxW): 220 x 12 mm, PA

95.1714

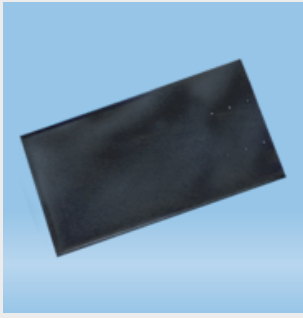
Closure clip, (LxW): 220 x 12 mm, material: PA, for cross-bottom bag 95.1713, 25 piece(s)/case



Battery bag, (LxW): 205 x 115 mm, PL

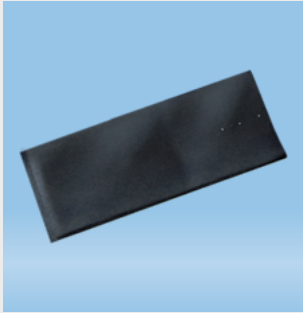
95.1725

Battery bag, without batteries, (LxW): 205 x 115 mm, material: PL, for standard cooling batteries, 12 piece(s)/case

**Mailing envelope, PE, (LxW): 310 x 180 mm****95.1410**

Mailing envelope, material: PE, blue, (LxW): 310 x 180 mm, film thickness: 120 µm, 50 piece(s)/case

Satisfies the requirement: **P 650**
Length of product: **310 mm**

**Mailing envelope, PE, (LxW): 310 x 123 mm****95.1411**

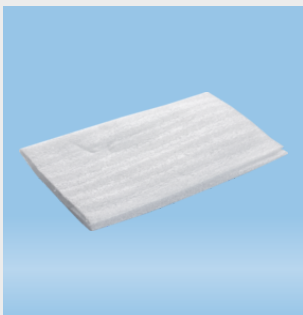
Mailing envelope, material: PE, blue, (LxW): 310 x 123 mm, film thickness: 120 µm, 50 piece(s)/case

Satisfies the requirement: **P 650**
Length of product: **310 mm**

**Adhesive label, (LxW): 145 x 98.5 mm, white****84.1412.033**

Adhesive label, (LxW): 145 x 98.5 mm, white, "EXEMPT MEDICAL SAMPLE", print: white/black, removable, 1,000 piece(s)/roll

Length of product: **145 mm**

**Foam film bag, (LxW): 185 x 230 mm, PE****95.1710**

Foam film bag, (LxW): 185 x 230 mm, material: PE

Length of product: **185 mm**

**Mailing envelope, PE, (LxW): 440 x 320 mm****86.974**

Mailing envelope, material: PE, transparent, (LxW): 440 x 320 mm, 300 piece(s)/case

Length of product: **440 mm**



Absorbent liner, suitable for Mailing container 126 x 30 mm, (LxW): 75 x 90 mm

Absorbent liner, suitable for Mailing container 126 x 30 mm, (LxW): 75 x 90 mm, 1,000 piece(s)/case

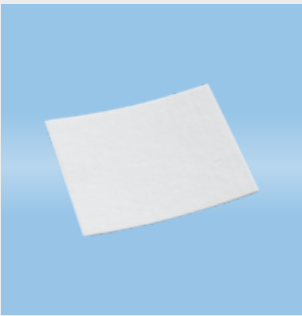
78.670



Absorbent liner, suitable for cold transport container, (LxW): 80 x 55 mm

Absorbent liner, suitable for cold transport container, (LxW): 80 x 55 mm, 100 piece(s)/case

78.671



Absorbent liner, suitable for mailing container 84 x 30 mm, (LxW): 75 x 65 mm

Absorbent liner, suitable for mailing container 84 x 30 mm, (LxW): 75 x 65 mm, 100 piece(s)/case

78.684



Mailing envelope, PE, (LxW): 230 x 300 mm

Mailing envelope, material: PE, (LxW): 230 x 300 mm, with 50 mm adhesive tape, film thickness: 0.045 mm, 100 piece(s)/case

95.978

Length of product: **230 mm**



Slide mailing container, length: 85 mm, cap attached

Slide mailing container, without ventilation, length: 85 mm, cap attached, 50 piece(s)/bag

86.972.150

По вопросам продаж и поддержки обращайтесь:

Алматы (727)345-47-04
Ангарск (3955)60-70-56
Архангельск (8182)63-90-72
Астрахань (8512)99-46-04
Барнаул (3852)73-04-60
Белгород (4722)40-23-64
Благовещенск (4162)22-76-07
Брянск (4832)59-03-52
Владивосток (423)249-28-31
Владикавказ (8672)28-90-48
Владимир (4922)49-43-18
Волгоград (844)278-03-48
Вологда (8172)26-41-59
Воронеж (473)204-51-73
Екатеринбург (343)384-55-89

Иваново (4932)77-34-06
Ижевск (3412)26-03-58
Иркутск (395)279-98-46
Казань (843)206-01-48
Калининград (4012)72-03-81
Калуга (4842)92-23-67
Кемерово (3842)65-04-62
Киров (8332)68-02-04
Коломна (4966)23-41-49
Кострома (4942)77-07-48
Краснодар (861)203-40-90
Красноярск (391)204-63-61
Курск (4712)77-13-04
Курган (3522)50-90-47
Липецк (4742)52-20-81

Магнитогорск (3519)55-03-13
Москва (495)268-04-70
Мурманск (8152)59-64-93
Набережные Челны (8552)20-53-41
Новокузнецк (3843)20-46-81
Ноябрьск (3496)41-32-12
Новосибирск (383)227-86-73
Омск (3812)21-46-40
Орел (4862)44-53-42
Оренбург (3532)37-68-04
Пенза (8412)22-31-16
Петрозаводск (8142)55-98-37
Псков (8112)59-10-37
Пермь (342)205-81-47

Ростов-на-Дону (863)308-18-15
Рязань (4912)46-61-64
Самара (846)206-03-16
Санкт-Петербург (812)309-46-40
Саратов (845)249-38-78
Севастополь (8692)22-31-93
Саранск (8342)22-96-24
Симферополь (3652)67-13-56
Смоленск (4812)29-41-54
Сочи (862)225-72-31
Ставрополь (8652)20-65-13
Сургут (3462)77-98-35
Сыктывкар (8212)25-95-17
Тамбов (4752)50-40-97
Тверь (4822)63-31-35

Тольятти (8482)63-91-07
Томск (3822)98-41-53
Тула (4872)33-79-87
Тюмень (3452)66-21-18
Ульяновск (8422)24-23-59
Улан-Удэ (3012)59-97-51
Уфа (347)229-48-12
Хабаровск (4212)92-98-04
Чебоксары (8352)28-53-07
Челябинск (351)202-03-61
Череповец (8202)49-02-64
Чита (3022)38-34-83
Якутск (4112)23-90-97
Ярославль (4852)69-52-93

Россия +7(495)268-04-70

Казахстан +(727)345-47-04

Беларусь +(375)257-127-884

Узбекистан +998(71)205-18-59

Киргизия +996(312)96-26-47

эл.почта: syd@nt-rt.ru || сайт: <https://sarstedt.nt-rt.ru/>