

Изделия для анализа крови

Технические характеристики

По вопросам продаж и поддержки обращайтесь:

Алматы (727)345-47-04
Ангарск (3955)60-70-56
Архангельск (8182)63-90-72
Астрахань (8512)99-46-04
Барнаул (3852)73-04-60
Белгород (4722)40-23-64
Благовещенск (4162)22-76-07
Брянск (4832)59-03-52
Владивосток (423)249-28-31
Владикавказ (8672)28-90-48
Владимир (4922)49-43-18
Волгоград (844)278-03-48
Вологда (8172)26-41-59
Воронеж (473)204-51-73
Екатеринбург (343)384-55-89

Иваново (4932)77-34-06
Ижевск (3412)26-03-58
Иркутск (395)279-98-46
Казань (843)206-01-48
Калининград (4012)72-03-81
Калуга (4842)92-23-67
Кемерово (3842)65-04-62
Киров (8332)68-02-04
Коломна (4966)23-41-49
Кострома (4942)77-07-48
Краснодар (861)203-40-90
Красноярск (391)204-63-61
Курск (4712)77-13-04
Курган (3522)50-90-47
Липецк (4742)52-20-81

Магнитогорск (3519)55-03-13
Москва (495)268-04-70
Мурманск (8152)59-64-93
Набережные Челны (8552)20-53-41
Нижний Новгород (831)429-08-12
Новокузнецк (3843)20-46-81
Ноябрьск (3496)41-32-12
Новосибирск (383)227-86-73
Омск (3812)21-46-40
Орел (4862)44-53-42
Оренбург (3532)37-68-04
Пенза (8412)22-31-16
Петрозаводск (8142)55-98-37
Псков (8112)59-10-37
Пермь (342)205-81-47

Ростов-на-Дону (863)308-18-15
Рязань (4912)46-61-64
Самара (846)206-03-16
Санкт-Петербург (812)309-46-40
Саратов (845)249-38-78
Севастополь (8692)22-31-93
Саранск (8342)22-96-24
Симферополь (3652)67-13-56
Смоленск (4812)29-41-54
Сочи (862)225-72-31
Ставрополь (8652)20-65-13
Сургут (3462)77-98-35
Сыктывкар (8212)25-95-17
Тамбов (4752)50-40-97
Тверь (4822)63-31-35

Тольятти (8482)63-91-07
Томск (3822)98-41-53
Тула (4872)33-79-87
Тюмень (3452)66-21-18
Ульяновск (8422)24-23-59
Улан-Удэ (3012)59-97-51
Уфа (347)229-48-12
Хабаровск (4212)92-98-04
Чебоксары (8352)28-53-07
Челябинск (351)202-03-61
Череповец (8202)49-02-64
Чита (3022)38-34-83
Якутск (4112)23-90-97
Ярославль (4852)69-52-93

Россия +7(495)268-04-70

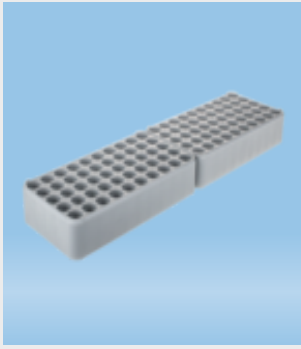
Казахстан +(727)345-47-04

Беларусь +(375)257-127-884

Узбекистан +998(71)205-18-59

Киргизия +996(312)96-26-47

эл.почта: syd@nt-rt.ru || сайт: <https://sarstedt.nt-rt.ru/>

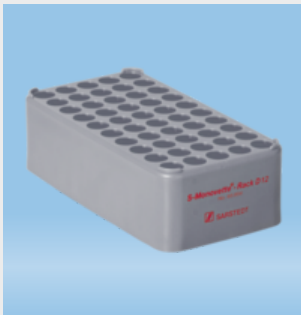


Double block rack D17, Ø opening: 17 mm, 5 x 20, grey

93.852.300

Double block rack D17, for 100 collection tubes, Ø opening: 17 mm, format: 5 x 20, grey, material: recycled PP

Number of wells:	100
Diameter of opening:	17 mm



Block Rack D12, Ø opening: 12 mm, 5 x 10, grey

93.854

Block Rack D12, for 50 collection tubes, Ø opening: 12 mm, format: 5 x 10, grey, material: PP

Number of wells:	50
Diameter of opening:	12 mm



Block Rack D12, Ø opening: 12 mm, 5 x 10, red

93.854.121

Block Rack D12, for 50 collection tubes, Ø opening: 12 mm, format: 5 x 10, red, material: PP

Number of wells:	50
Diameter of opening:	12 mm

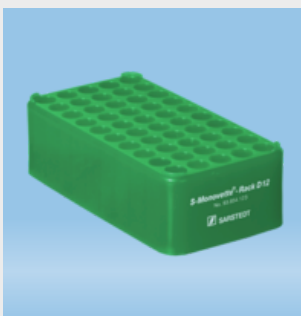


Block Rack D12, Ø opening: 12 mm, 5 x 10, yellow

93.854.122

Block Rack D12, for 50 collection tubes, Ø opening: 12 mm, format: 5 x 10, yellow, material: PP

Number of wells:	50
Diameter of opening:	12 mm



Block Rack D12, Ø opening: 12 mm, 5 x 10, green

93.854.123

Block Rack D12, for 50 collection tubes, Ø opening: 12 mm, format: 5 x 10, green, material: PP

Number of wells:	50
Diameter of opening:	12 mm



Block Rack D12, Ø opening: 12 mm, 5 x 10, blue

93.854.124

Block Rack D12, for 50 collection tubes, Ø opening: 12 mm, format: 5 x 10, blue, material: PP

Number of wells: 50
Diameter of opening: 12 mm



Block Rack D12, Ø opening: 12 mm, 5 x 10, orange

93.854.125

Block Rack D12, for 50 collection tubes, Ø opening: 12 mm, format: 5 x 10, orange, material: PP

Number of wells: 50
Diameter of opening: 12 mm



Block Rack D13, Ø opening: 13 mm, 5 x 10, grey

93.853

Block Rack D13, for 50 Monovettes and tubes up to 13 mm diameter, Ø opening: 13 mm, format: 5 x 10, grey, material: recycled PP

Number of wells: 50
Diameter of opening: 13 mm



Block Rack D13, Ø opening: 13 mm, 5 x 10, red

93.853.131

Block Rack D13, for 50 Monovettes and tubes up to 13 mm diameter, Ø opening: 13 mm, format: 5 x 10, red, material: PP

Number of wells: 50
Diameter of opening: 13 mm



Block Rack D13, Ø opening: 13 mm, 5 x 10, yellow

93.853.132

Block Rack D13, for 50 collection tubes, Ø opening: 13 mm, format: 5 x 10, yellow, material: PP

Number of wells: 50
Diameter of opening: 13 mm

**Block Rack D13, Ø opening: 13 mm, 5 x 10, green****93.853.133**

Block Rack D13, for 50 collection tubes, Ø opening: 13 mm, format: 5 x 10, green, material: recycled PP

Number of wells: 50
Diameter of opening: 13 mm

**Block Rack D13, Ø opening: 13 mm, 5 x 10, blue****93.853.134**

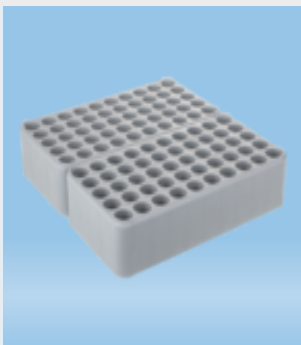
Block Rack D13, for 50 collection tubes, Ø opening: 13 mm, format: 5 x 10, blue, material: recycled PP

Number of wells: 50
Diameter of opening: 13 mm

**Block Rack D13, Ø opening: 13 mm, 5 x 10, orange****93.853.135**

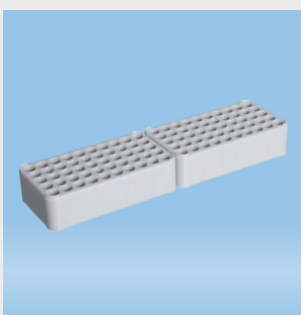
Block Rack D13, for 50 collection tubes, Ø opening: 13 mm, format: 5 x 10, orange, material: recycled PP

Number of wells: 50
Diameter of opening: 13 mm

**Double block rack D13, Ø opening: 13 mm, 10 x 10, grey****93.853.200**

Double block rack D13, for 100 collection tubes, Ø opening: 13 mm, format: 10 x 10, grey, material: recycled PP

Number of wells: 100
Diameter of opening: 13 mm

**Double block rack D13, Ø opening: 13 mm, 5 x 20, grey****93.853.300**

Double block rack D13, for 100 collection tubes, Ø opening: 13 mm, format: 5 x 20, grey, material: PP

Number of wells: 100
Diameter of opening: 13 mm



Block Rack D17, Ø opening: 17 mm, 5 x 10, grey

93.852

Block Rack D17, for 50 collection tubes, Ø opening: 17 mm, format: 5 x 10, grey, material: recycled PP

Number of wells: 50
Diameter of opening: 17 mm



Block Rack D17, Ø opening: 17 mm, 5 x 10, brown

93.852.168

Block Rack D17, for 50 collection tubes, Ø opening: 17 mm, format: 5 x 10, brown, material: PP

Number of wells: 50
Diameter of opening: 17 mm



Block Rack D17, Ø opening: 17 mm, 5 x 10, violet

93.852.169

Block Rack D17, for 50 collection tubes, Ø opening: 17 mm, format: 5 x 10, violet, material: recycled PP

Number of wells: 50
Diameter of opening: 17 mm



Block Rack D17, Ø opening: 17 mm, 5 x 10, creamy white

93.852.170

Block Rack D17, for 50 collection tubes, Ø opening: 17 mm, format: 5 x 10, creamy white, material: recycled PP

Number of wells: 50
Diameter of opening: 17 mm

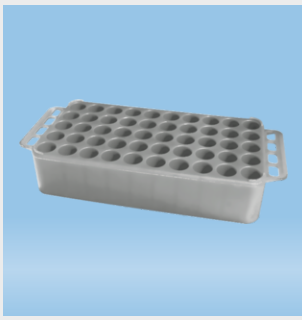


Block Rack D17, Ø opening: 17 mm, 5 x 10, red

93.852.171

Block Rack D17, for 50 collection tubes, Ø opening: 17 mm, format: 5 x 10, red, material: recycled PP

Number of wells: 50
Diameter of opening: 17 mm



Block Rack D17, Ø opening: 17 mm, 5 x 10, grey, with handle

93.851

Block Rack D17, for 50 collection tubes, Ø opening: 17 mm, format: 5 x 10, grey, with handle, material: PP

Number of wells: 50
Diameter of opening: 17 mm



Block Rack D17, Ø opening: 17 mm, 5 x 10, yellow

93.852.172

Block Rack D17, for 50 collection tubes, Ø opening: 17 mm, format: 5 x 10, yellow, material: PP

Number of wells: 50
Diameter of opening: 17 mm



Block Rack D17, Ø opening: 17 mm, 5 x 10, green

93.852.173

Block Rack D17, for 50 collection tubes, Ø opening: 17 mm, format: 5 x 10, green, material: recycled PP

Number of wells: 50
Diameter of opening: 17 mm

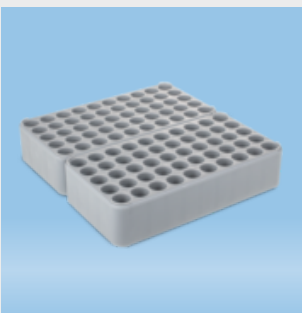


Block Rack D17, Ø opening: 17 mm, 5 x 10, blue

93.852.174

Block Rack D17, for 50 collection tubes, Ø opening: 17 mm, format: 5 x 10, blue, material: recycled PP

Number of wells: 50
Diameter of opening: 17 mm



Double block rack D17, Ø opening: 17 mm, 10 x 10, grey

93.852.200

Double block rack D17, for 100 collection tubes, Ø opening: 17 mm, format: 10 x 10, grey, material: recycled PP

Number of wells: 100
Diameter of opening: 17 mm



Block Rack D17, Ø opening: 17 mm, 5 x 10, red, with handle

93.851.171

Block Rack D17, for 50 collection tubes, Ø opening: 17 mm, format: 5 x 10, red, with handle, material: recycled PP

Number of wells: 50
Diameter of opening: 17 mm



Block Rack D17, Ø opening: 17 mm, 5 x 10, yellow, with handle

93.851.172

Block Rack D17, for 50 collection tubes, Ø opening: 17 mm, format: 5 x 10, yellow, with handle, material: PP

Number of wells: 50
Diameter of opening: 17 mm



Block Rack D17, Ø opening: 17 mm, 5 x 10, green, with handle

93.851.173

Block Rack D17, for 50 collection tubes, Ø opening: 17 mm, format: 5 x 10, green, with handle, material: PP

Number of wells: 50
Diameter of opening: 17 mm



Block Rack D17, Ø opening: 17 mm, 5 x 10, blue, with handle

93.851.174

Block Rack D17, for 50 collection tubes, Ø opening: 17 mm, format: 5 x 10, blue, with handle, material: PP

Number of wells: 50
Diameter of opening: 17 mm



Block Rack D17, Ø opening: 17 mm, 5 x 10, orange, with handle

93.851.175

Block Rack D17, for 50 collection tubes, Ø opening: 17 mm, format: 5 x 10, orange, with handle, material: PP

Number of wells: 50
Diameter of opening: 17 mm



Protective cover, ABS, light grey, suitable for Block racks D17

93.857

Protective cover, material: ABS, light grey, suitable for Block racks D17, 25 piece(s)/case



Thrombo Plus[®], 2 ml, cap red, (LxØ): 75 x 11.5 mm, with print

51.334

Thrombo Plus[®], for direct platelet counting, nominal volume: 2 ml, cap red, preparation: Hg salt, push cap, (LxØ): 75 x 11.5 mm, round base, with print, 50 piece(s)/case

Example of use:
Application:

for direct platelet counting
venous and capillary blood samples



S-Monovette[®], 25 ml, for Formalin system, (LxØ): 97 x 25 mm, with paper label

09.1705.001

S-Monovette[®], up to 25 ml, for Formalin system, (LxØ): 97 x 25 mm, with paper label, 50 piece(s)/bag

Type of smallest subpackaging: bag

Application: Tissue fixation



Cap, red, suitable for tubes Ø 10-17 mm

65.1379.002

Cap, red, suitable for tubes Ø 10-17 mm, 1,000 piece(s)/bag



Screw cap tube, 2.5 ml, 2.5 ml, (LxØ): 75 x 13 mm, conical false bottom, rounded tube bottom, PP, without cap, 500 piece(s)/StackPack

60.614.015

Screw cap tube, working volume: 2.5 ml, nominal volume: 2.5 ml, (LxØ): 75 x 13 mm, conical false bottom, rounded tube bottom, transparent, material: PP, with graduations, without cap, 500 piece(s)/StackPack, 2,000 piece(s)/carton

Diameter: 13 mm
Length of product: 75 mm



Tube segment opener, for tubes with inner Ø 10 mm, HD-PE, white 95.1000

Tube segment opener, for tubes with inner Ø 10 mm, material: HD-PE, white, 500 piece(s)/case

Product material: High Density Polyethylene (HD-PE)



Tube segment opener, for bed side test cards, HD-PE, white 95.1000.100

Tube segment opener, for bed side test cards, material: HD-PE, white, 200 piece(s)/case

Design: for bed side test cards
Product material: High Density Polyethylene (HD-PE)



Tube segment opener, mounted on tube 75 x 12 mm, HD-PE, white, tube: PS 95.1000.476

Tube segment opener, mounted on tube 75 x 12 mm, material: HD-PE, white, tube: PS, 50 piece(s)/StackPack

Design: mounted on tube 75 x 12 mm
Product material: High Density Polyethylene (HD-PE)



Tube segment opener, for tubes with inner Ø 8.2 mm, HD-PE, white 95.1000.800

Tube segment opener, for tubes with inner Ø 8.2 mm, material: HD-PE, white, 500 piece(s)/case

Product material: High Density Polyethylene (HD-PE)



Screw cap tube, 5 ml, round base, transparent

63.504.027

Screw cap tube, working volume: 5 ml, (LxØ): 75 x 13 mm, round base, PP, transparent, cap assembled, with plastic label, label/print: transparent/green, "CSF/Liquor", with graduations, cap assembled, natural, sterile, 1 piece(s)/blister

Example of use: **CSF, collection, transport and storage of CSF/liquor**



Micro sample tube 100 µl brilliant, 100 µl, screw cap

42.117

Micro sample tube 100 µl brilliant, preparation: 1% brilliant cresyl blue solution, nominal volume: 100 µl, (LxØ) with cap: 46 x 10.8 mm, screw cap, cap: blue, conical base, 50 piece(s)/case

Example of use: **Reticulocyte counting**



Haemo-Diff®[®], without smear edge, for producing blood smears

14.1217

Haemo-Diff®[®], without smear edge, for producing blood smears, 500 piece(s)/case

Application: **Blood smear**

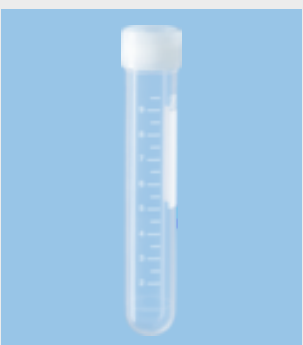


Tube, suitable for Coombs test, transparent

86.1509

Tube, suitable for Coombs test, material: glass, (LxØ): 75 x 11.5 mm, transparent, 294 piece(s)/StackPack

Application: **Coombs test**



Screw cap tube, 10 ml, (LxØ): 92 x 15.3 mm, PP, with print

Screw cap tube, working volume: 10 ml, (LxØ): 92 x 15.3 mm, material: PP, round base, transparent, screw cap, transparent, cap assembled, with print, label/print: white, with graduations, sterile, 100 piece(s)/bag

62.610.201



Cuvette and steel balls, suitable for Amelung KC coagulometer (macro), transparent **73.834**

Cuvette and steel balls, suitable for Amelung KC coagulometer (macro), material: PS, length: 23 mm, transparent, 1,000 cuvettes/bag and 1,000 steel balls/flask



Haemo-Diff[®], with smear edge, for producing blood smears **14.1218**

Haemo-Diff[®], with smear edge, for producing blood smears, 500 piece(s)/case

Application: **Blood smear**



Tube with false bottom CSF, 2.5 ml, (LxØ): 75 x 13 mm, round base, PP, Low Binding, cap enclosed, sterile, 1 piece(s)/blister **63.614.625**

Tube with false bottom CSF, nominal volume: 2.5 ml, (LxØ): 75 x 13 mm, round base, transparent, material: PP, Low Binding, with plastic label, label/print: transparent/blue, "CSF", fill mark, cap enclosed, blue, sterile, 1 piece(s)/blister, 100 piece(s)/carton

Example of use: **Alzheimer's disease (AD) diagnostics**
Application: **collection and storage of diagnostic specimens**



Screw cap tube, 10 ml, (LxØ): 92 x 15.3 mm, PP, with print **62.610.018**

Screw cap tube, working volume: 10 ml, (LxØ): 92 x 15.3 mm, material: PP, round base, transparent, screw cap, natural, cap assembled, with print, label/print: green, "CSF/Liquor", with graduations, sterile, 1 piece(s)/blister



Screw cap tube, 12 ml, (LxØ): 99 x 16 mm, SAN **60.9924.952**

Screw cap tube, working volume: 12 ml, (LxØ): 99 x 16 mm, material: SAN, round base, highly transparent, screw cap, yellow, cap assembled, 4 printed boxes, with graduations, sterile, 4 piece(s)/blister



Formalin system, buffered formalin solution 450 ml

51.1703

Formalin system, preparation: buffered formalin solution 450 ml, 1 piece(s)/case

Type of smallest subpackaging: case

Application: Tissue fixation



Wall holder, stainless steel, for Formalin system

95.1706

Wall holder, material: stainless steel, for Formalin system, 1 piece(s)/case

Type of smallest subpackaging: case

Application: Tissue fixation



Formalin Set, buffered formalin solution 450 ml, S-Monovette® 9 ml 51.1703.009

Formalin Set, preparation: buffered formalin solution 450 ml, set components: Formalin system with 450 ml formaldehyde solution (4%) and 100 S-Monovettes 9 ml, 1 piece(s)/case

Type of smallest subpackaging: case

Application: Tissue fixation



Formalin Set, buffered formalin solution 450 ml, S-Monovette® 25 ml

51.1703.025

Formalin Set, preparation: buffered formalin solution 450 ml, set components: Formalin system with 450 ml formaldehyde solution (4%) and 50 S-Monovettes 25 ml, 1 piece(s)/case

Type of smallest subpackaging: case

Application: Tissue fixation



S-Monovette®, 9 ml, for Formalin system, (LxØ): 92 x 16 mm, with paper label

09.1704.001

S-Monovette®, up to 9 ml, for Formalin system, (LxØ): 92 x 16 mm, with paper label, 50 piece(s)/bag

Type of smallest subpackaging: bag

Application: Tissue fixation



Screw cap, suitable for cold transport container

65.590

Screw cap, suitable for cold transport container



Tube, suitable for Coombs test, transparent

86.1509

Tube, suitable for Coombs test, material: glass, (LxØ): 75 x 11.5 mm, transparent, 294 piece(s)/StackPack

Diameter: 11,5 mm
Length of product: 75 mm



Sample tube, suitable for Hitachi analyser, transparent

73.666

Sample tube, suitable for Hitachi analyser, material: PS, 3 ml, (LxØ): 38 x 17 mm, transparent, 1,000 piece(s)/bag

Diameter: 17 mm
Length of product: 38 mm



Lid for sample tube 73.666, length: 8 mm, LD-PE

65.718

Lid for sample tube 73.666, natural, length: 8 mm, material: LD-PE, 1,000 piece(s)/bag

Length of product: 8 mm



Sample tube, suitable for auto-analyzer, transparent

73.641

Sample tube, suitable for auto-analyzer, material: PS, 1.5 ml, (LxØ): 24 x 14 mm, transparent, 1,000 piece(s)/bag

Diameter: 14 mm
Length of product: 24 mm

**Sample tube, suitable for auto-analyzer, transparent****73.646**

Sample tube, suitable for auto-analyzer, material: PS, 3.5 ml, (LxØ): 38 x 14 mm, transparent, 1,000 piece(s)/bag

Diameter: 14 mm
Length of product: 38 mm

**Lid for sample tube 73.641 & 73.646, length: 8 mm, LD-PE****65.649**

Lid for sample tube 73.641 & 73.646, natural, length: 8 mm, material: LD-PE, 1,000 piece(s)/bag

Length of product: 8 mm

**Sample tube, suitable for Boehringer ES 300[®] and ES 600[®], transparent****73.663**

Sample tube, suitable for Boehringer ES 300[®] and ES 600[®], material: PS, 2 ml, (LxØ): 40 x 12 mm, transparent, 500 piece(s)/bag

Diameter: 12 mm
Length of product: 40 mm

**Sample tube, suitable for Abbott analyser AXSYM, transparent****73.667**

Sample tube, suitable for Abbott analyser AXSYM, material: PS, 2.5 ml, (LxØ): 53 x 12 mm, transparent, 500 piece(s)/bag

Diameter: 12 mm
Length of product: 53 mm

**RIA tube, suitable for gamma counters, transparent****73.1055**

RIA tube, suitable for gamma counters, material: PP, 0.5 ml, (LxØ): 22 x 8 mm, transparent, 1,000 piece(s)/bag

Diameter: 8 mm
Length of product: 22 mm

**Push cap for RIA and Hitachi tube, length: 9 mm, LD-PE****65.1375**

Push cap for RIA and Hitachi tube, natural, length: 9 mm, material: LD-PE, 1,000 piece(s)/bag

Length of product: **9 mm**

**Sample tube, suitable for Coulter Counter****73.650.500**

Sample tube, suitable for Coulter Counter, cap enclosed, material: PS, (LxØ): 60 x 34 mm, 250 piece(s)/bag

Diameter: **34 mm**
Length of product: **60 mm**

**Scintillation vials****73.662.500**

Scintillation vials, material: HD-PE, 20 ml, (LxØ): 58 x 27 mm, 500 piece(s)/bag

Diameter: **27 mm**
Length of product: **58 mm**

**Mini vial, white****73.680**

Mini vial, cap enclosed, material: HD-PE, 6 ml, (LxØ): 56 x 15 mm, white, 1,000 piece(s)/bag

Diameter: **15 mm**
Length of product: **56 mm**

**Insert, suitable for tubes and S-Monovette® Ø 13 mm, transparent**

Insert, suitable for tubes and S-Monovette® Ø 13 mm, material: PS, 1,000 µl, length: 23.5 mm, transparent, 500 piece(s)/bag

23,5 mm

Length of product: **73.1051**



Multi-purpose container, max. volume: 250 ml, (LxØ): 100 x 73 mm, PS, white **75.560**
Multi-purpose container, max. volume: 250 ml, (LxØ): 100 x 73 mm, Ø opening: 73 mm, white, material: PS, 50 piece(s)/bag



Insert, suitable for tubes and S-Monovette® Ø 15 mm, transparent **73.1052**
Insert, suitable for tubes and S-Monovette® Ø 15 mm, material: PS, 1.5 ml, length: 23.5 mm, transparent, 500 piece(s)/bag

Length of product: **23,5 mm**



Insert, suitable for tubes and S-Monovette® Ø 16 mm, transparent **73.1053**
Insert, suitable for tubes and S-Monovette® Ø 16 mm, material: PS, length: 23.5 mm, transparent, 500 piece(s)/bag

Length of product: **23,5 mm**

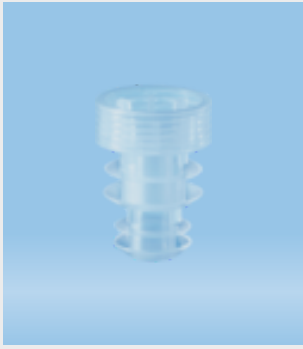


Insert, suitable for tubes and S-Monovette® Ø 15 mm, transparent **73.1052.001**
Insert, suitable for tubes and S-Monovette® Ø 15 mm, material: PS, 2.5 ml, length: 32 mm, transparent, 500 piece(s)/bag

Length of product: **32 mm**



Medicine cup, max. volume: 30 ml, (LxØ): 40 x 37 mm, graduated, PP, red **75.1337.502**
Medicine cup, max. volume: 30 ml, (LxØ): 40 x 37 mm, Ø opening: 37 mm, red, graduated, material: PP, 75 piece(s)/bag



Archiving cap, light blue, suitable for S-Monovette®[®], tubes Ø 13-16 mm

Archiving cap, without filter, light blue, suitable for S-Monovette®[®], tubes Ø 13-16 mm, 1,000 piece(s)/bag **65.647.300**



Screw cap tube, 5 ml, (LxØ): 92 x 15.3 mm, conical false bottom, rounded tube bottom, PP, without cap, 100 piece(s)/bag **60.612.010**

Screw cap tube, working volume: 5 ml, (LxØ): 92 x 15.3 mm, conical false bottom, rounded tube bottom, transparent, material: PP, without cap, 100 piece(s)/bag, 1,000 piece(s)/carton

Diameter: 15,3 mm
Length of product: 92 mm



Screw cap tube, 3.5 ml, (LxØ): 92 x 13 mm, conical false bottom, flat tube bottom, PP, cap assembled, 100 piece(s)/bag **62.613**

Screw cap tube, working volume: 3.5 ml, (LxØ): 92 x 13 mm, conical false bottom, flat tube bottom, transparent, material: PP, with graduations, cap assembled, 100 piece(s)/bag, 1,000 piece(s)/carton

Diameter: 13 mm
Length of product: 92 mm



Screw cap tube, 3.5 ml, (LxØ): 92 x 13 mm, conical false bottom, flat tube bottom, PP, without cap, 100 piece(s)/bag **60.613.010**

Screw cap tube, working volume: 3.5 ml, (LxØ): 92 x 13 mm, conical false bottom, flat tube bottom, transparent, material: PP, without cap, 100 piece(s)/bag, 1,000 piece(s)/carton

Diameter: 13 mm
Length of product: 92 mm



Cap, yellow, suitable for tubes Ø 10-17 mm

65.1379.004

Cap, yellow, suitable for tubes Ø 10-17 mm, 1,000 piece(s)/bag



Screw cap tube, 3.5 ml, (LxØ): 92 x 13 mm, conical false bottom, rounded tube bottom, PP, without cap, 100 piece(s)/bag 60.617.010

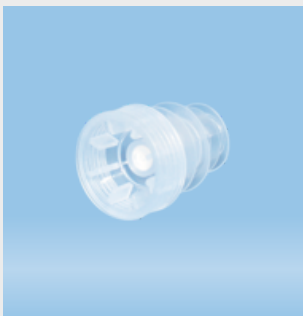
Screw cap tube, working volume: 3.5 ml, (LxØ): 92 x 13 mm, conical false bottom, rounded tube bottom, transparent, material: PP, without cap, 100 piece(s)/bag, 1,000 piece(s)/carton

Diameter: 13 mm
Length of product: 92 mm



light blue, suitable for S-Monovette®, tubes Ø 13-16 mm 65.647.320

with filter, light blue, suitable for S-Monovette®, tubes Ø 13-16 mm, 1,000 piece(s)/bag



Archiving cap, light blue, suitable for S-Monovette®, tubes Ø 13-16 mm 65.647.020

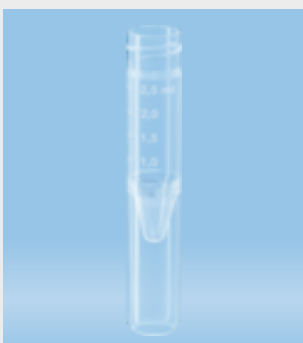
Archiving cap, with filter, light blue, suitable for S-Monovette®, tubes Ø 13-16 mm, 1,000 piece(s)/bag



Screw cap tube, 3.5 ml, (LxØ): 92 x 13 mm, conical false bottom, rounded tube bottom, PP, cap assembled, 100 piece(s)/bag 62.617

Screw cap tube, working volume: 3.5 ml, (LxØ): 92 x 13 mm, conical false bottom, rounded tube bottom, transparent, material: PP, with graduations, cap assembled, 100 piece(s)/bag, 1,000 piece(s)/carton

Diameter: 13 mm
Length of product: 92 mm



Screw cap tube, 2.5 ml, (LxØ): 75 x 13 mm, conical false bottom, rounded tube bottom, PP, without cap, 1,000 piece(s)/bag 60.614.010

Screw cap tube, working volume: 2.5 ml, (LxØ): 75 x 13 mm, conical false bottom, rounded tube bottom, transparent, material: PP, with graduations, without cap, 1,000 piece(s)/bag, 2,000 piece(s)/carton

Diameter: 13 mm
Length of product: 75 mm



Archiving cap, light blue, suitable for S-Monovette® tubes Ø 13-16 mm 65.647

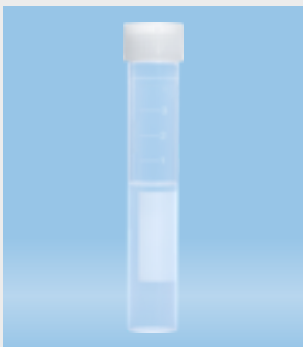
Archiving cap, without filter, light blue, suitable for S-Monovette®, tubes Ø 13-16 mm, 1,000 piece(s)/bag



Cap, blue, suitable for tubes Ø 10-17 mm

65.1379.006

Cap, blue, suitable for tubes Ø 10-17 mm, 1,000 piece(s)/bag



Screw cap tube, 5 ml, (LxØ): 92 x 15.3 mm, conical false bottom, flat tube bottom, PP, cap assembled, 100 piece(s)/bag

62.611

Screw cap tube, working volume: 5 ml, (LxØ): 92 x 15.3 mm, conical false bottom, flat tube bottom, transparent, material: PP, with print, label/print: white, with graduations, cap assembled, 100 piece(s)/bag, 1,000 piece(s)/carton

Diameter: 15,3 mm
Length of product: 92 mm



Tube with false bottom, 5 ml, (LxØ): 92 x 15.3 mm, conical false bottom, flat tube bottom, PP, without cap, 100 piece(s)/bag

60.611.010

Tube with false bottom, working volume: 5 ml, (LxØ): 92 x 15.3 mm, conical false bottom, flat tube bottom, transparent, material: PP, without cap, 100 piece(s)/bag, 1,000 piece(s)/carton

Diameter: 15,3 mm
Length of product: 92 mm



Cap, natural, suitable for tubes Ø 10-17 mm

65.1379

Cap, natural, suitable for tubes Ø 10-17 mm, 1,000 piece(s)/bag



Screw cap tube, 2.5 ml, (LxØ): 75 x 13 mm, conical false bottom, rounded tube bottom, PP, cap assembled, 100 piece(s)/bag **60.614.011**

Screw cap tube, working volume: 2.5 ml, (LxØ): 75 x 13 mm, conical false bottom, rounded tube bottom, transparent, material: PP, with graduations, cap assembled, 100 piece(s)/bag, 1,000 piece(s)/carton

Diameter: 13 mm
Length of product: 75 mm



Tube with false bottom CSF, 2.5 ml, (LxØ): 75 x 13 mm, round base, PP, Low Binding, cap enclosed, sterile, 1 piece(s)/blister **63.614.625**

Tube with false bottom CSF, nominal volume: 2.5 ml, (LxØ): 75 x 13 mm, round base, transparent, material: PP, Low Binding, with plastic label, label/print: transparent/blue, "CSF", fill mark, cap enclosed, blue, sterile, 1 piece(s)/blister, 100 piece(s)/carton

Diameter: 13 mm
Length of product: 75 mm



Screw cap, HD-PE, natural, for tubes 75 x 13 mm **65.163**

Screw cap, material: HD-PE, natural, for tubes 75 x 13 mm, 1,000 piece(s)/bag



Screw cap tube, 4 ml, (LxØ): 92 x 15.3 mm, conical false bottom, rounded tube bottom, PP, cap assembled, 100 piece(s)/bag **62.612**

Screw cap tube, working volume: 4 ml, (LxØ): 92 x 15.3 mm, conical false bottom, rounded tube bottom, transparent, material: PP, with print, label/print: white, with graduations, cap assembled, 100 piece(s)/bag, 1,000 piece(s)/carton

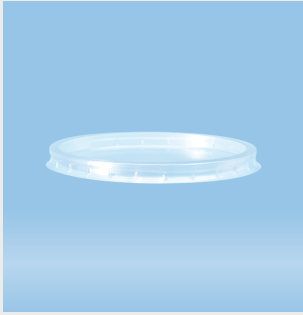
Diameter: 15,3 mm
Length of product: 92 mm



Screw cap tube, 5 ml, (LxØ): 92 x 15.3 mm, conical false bottom, flat tube bottom, PP, without cap, 100 piece(s)/bag **60.611.011**

Screw cap tube, working volume: 5 ml, (LxØ): 92 x 15.3 mm, conical false bottom, flat tube bottom, brown, material: PP, without cap, 100 piece(s)/bag, 1,000 piece(s)/carton

Diameter: 15,3 mm
Length of product: 92 mm



Snap-on lid, for 100-ml container 75.570, PS, transparent

76.571

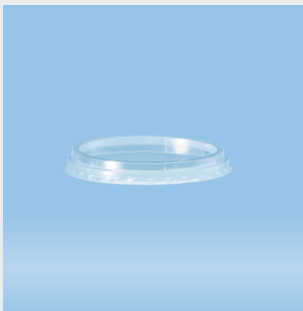
Snap-on lid, for 100-ml container 75.570, material: PS, transparent, 100 piece(s)/tube bag



Medicine cup, max. volume: 30 ml, (LxØ): 40 x 37 mm, graduated, PP, blue

75.1337.506

Medicine cup, max. volume: 30 ml, (LxØ): 40 x 37 mm, Ø opening: 37 mm, blue, graduated, material: PP, 75 piece(s)/bag



Snap-on lid, suitable for 250-ml container 75.560, PS, highly transparent

76.561

Snap-on lid, suitable for 250-ml container 75.560, material: PS, highly transparent, 50 piece(s)/tube bag



Medicine cup, max. volume: 30 ml, (LxØ): 40 x 37 mm, graduated, PP, green

75.1337.505

Medicine cup, max. volume: 30 ml, (LxØ): 40 x 37 mm, Ø opening: 37 mm, green, graduated, material: PP, 75 piece(s)/bag



Lid, for 30-ml medicine cup, PE, white

76.1340.560

Lid, for 30-ml medicine cup, material: PE, white, collection and storage of urine, 75 piece(s)/bag



Container, max. volume: 100 ml, (LxØ): 49 x 70 mm, PS, white

75.570

Container, max. volume: 100 ml, (LxØ): 49 x 70 mm, Ø opening: 70 mm, white, cap: transparent, material: PS, snap-on lid, 50 piece(s)/tube bag



Medicine cup, max. volume: 30 ml, (LxØ): 40 x 37 mm, graduated, PP, transparent

75.1337.500

Medicine cup, max. volume: 30 ml, (LxØ): 40 x 37 mm, Ø opening: 37 mm, transparent, graduated, material: PP, 75 piece(s)/bag



Container, max. volume: 100 ml, (LxØ): 49 x 70 mm, PS, transparent, without print

75.570.001

Container, max. volume: 100 ml, (LxØ): 49 x 70 mm, Ø opening: 70 mm, transparent, cap: transparent, material: PS, snap-on lid, without print, non-sterile, 50 piece(s)/tube bag



Urine container, 125 ml, (ØxH): 66 x 67 mm, PP, highly transparent

75.1355

Urine container, collection and storage of urine, max. working volume: 125 ml, (ØxH): 66 x 67 mm, Ø opening: 66 mm, highly transparent, graduated, material: PP, 50 piece(s)/bag



Lid, for 30-ml medicine cup, PE, white

76.1340.500

Lid, for 30-ml medicine cup, material: PE, white, 750 piece(s)/bag



Medicine cup, max. volume: 30 ml, (LxØ): 40 x 37 mm, graduated, PP, yellow **75.1337.504**
Medicine cup, max. volume: 30 ml, (LxØ): 40 x 37 mm, Ø opening: 37 mm, yellow, graduated, material: PP, 75 piece(s)/bag



Urine collection cup, 500 ml, (ØxH): 80 x 148 mm, PP, natural **75.1356**
Urine collection cup, collection and storage of urine, max. working volume: 500 ml, (ØxH): 80 x 148 mm, Ø opening: 80 mm, natural, material: PP, 250 piece(s)/case



Snap-on lid, for 100-ml container 75.570.001, PET, transparent **76.571.001**
Snap-on lid, for 100-ml container 75.570.001, material: PET, transparent, 50 piece(s)/tube bag



Container with screw cap, 100 ml, PP, transparent **75.1354.001**
Container with screw cap, collection and storage of urine, max. working volume: 100 ml, Ø opening: 58 mm, transparent, graduated, material: PP, screw cap, cap: green, cap enclosed, 25 pieces each stacked inside each other, 500 piece(s)/bag



Multi-purpose container, max. volume: 125 ml, (LxØ): 85 x 62 mm, graduated, PP, transparent
Multi-purpose container, max. volume: 125 ml, (LxØ): 85 x 62 mm, Ø opening: 62 mm, transparent, graduated, material: PP, 50 piece(s)/bag

75.565

По вопросам продаж и поддержки обращайтесь:

Алматы (727)345-47-04
Ангарск (3955)60-70-56
Архангельск (8182)63-90-72
Астрахань (8512)99-46-04
Барнаул (3852)73-04-60
Белгород (4722)40-23-64
Благовещенск (4162)22-76-07
Брянск (4832)59-03-52
Владивосток (423)249-28-31
Владикавказ (8672)28-90-48
Владимир (4922)49-43-18
Волгоград (844)278-03-48
Вологда (8172)26-41-59
Воронеж (473)204-51-73
Екатеринбург (343)384-55-89

Иваново (4932)77-34-06
Ижевск (3412)26-03-58
Иркутск (395)279-98-46
Казань (843)206-01-48
Калининград (4012)72-03-81
Калуга (4842)92-23-67
Кемерово (3842)65-04-62
Киров (8332)68-02-04
Коломна (4966)23-41-49
Кострома (4942)77-07-48
Краснодар (861)203-40-90
Красноярск (391)204-63-61
Курск (4712)77-13-04
Курган (3522)50-90-47
Липецк (4742)52-20-81

Магнитогорск (3519)55-03-13
Москва (495)268-04-70
Мурманск (8152)59-64-93
Набережные Челны (8552)20-53-41
Новокузнецк (3843)20-46-81
Ноябрьск (3496)41-32-12
Новосибирск (383)227-86-73
Омск (3812)21-46-40
Орел (4862)44-53-42
Оренбург (3532)37-68-04
Пенза (8412)22-31-16
Петрозаводск (8142)55-98-37
Псков (8112)59-10-37
Пермь (342)205-81-47

Ростов-на-Дону (863)308-18-15
Рязань (4912)46-61-64
Самара (846)206-03-16
Санкт-Петербург (812)309-46-40
Саратов (845)249-38-78
Севастополь (8692)22-31-93
Саранск (8342)22-96-24
Симферополь (3652)67-13-56
Смоленск (4812)29-41-54
Сочи (862)225-72-31
Ставрополь (8652)20-65-13
Сургут (3462)77-98-35
Сыктывкар (8212)25-95-17
Тамбов (4752)50-40-97
Тверь (4822)63-31-35

Тольятти (8482)63-91-07
Томск (3822)98-41-53
Тула (4872)33-79-87
Тюмень (3452)66-21-18
Ульяновск (8422)24-23-59
Улан-Удэ (3012)59-97-51
Уфа (347)229-48-12
Хабаровск (4212)92-98-04
Чебоксары (8352)28-53-07
Челябинск (351)202-03-61
Череповец (8202)49-02-64
Чита (3022)38-34-83
Якутск (4112)23-90-97
Ярославль (4852)69-52-93

Россия +7(495)268-04-70

Казахстан +(727)345-47-04

Беларусь +(375)257-127-884

Узбекистан +998(71)205-18-59

Киргизия +996(312)96-26-47

эл.почта: syd@nt-rt.ru || сайт: <https://sarstedt.nt-rt.ru/>